

Diocese of Derry and Raphoe

The Parishes of Leckpatrick and Dunnalong



St. Patrick's Church

Leckpatrick



St. John's Church

Dunnalong

Name of Parish: The Grouped Parishes of Leckpatrick and Dunnalong

Vision for the Future:

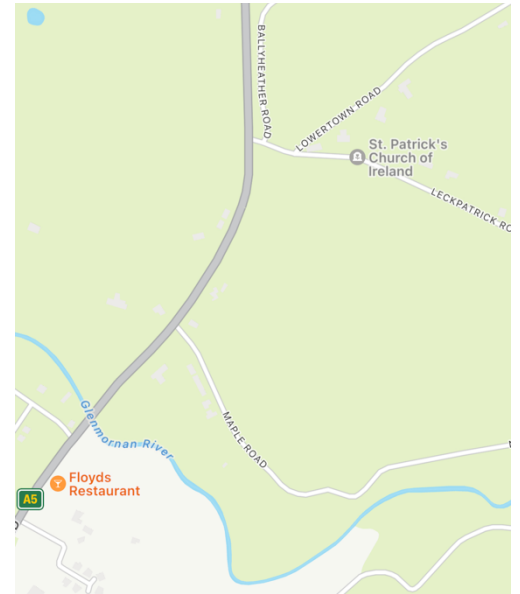
Our vision is that we strive to continue to develop, and build upon the good relations with the community. We aim to reach out to new members, and engage with those within the Parish who are on the fringe of Church life.

Our Aspirations for a New Rector:

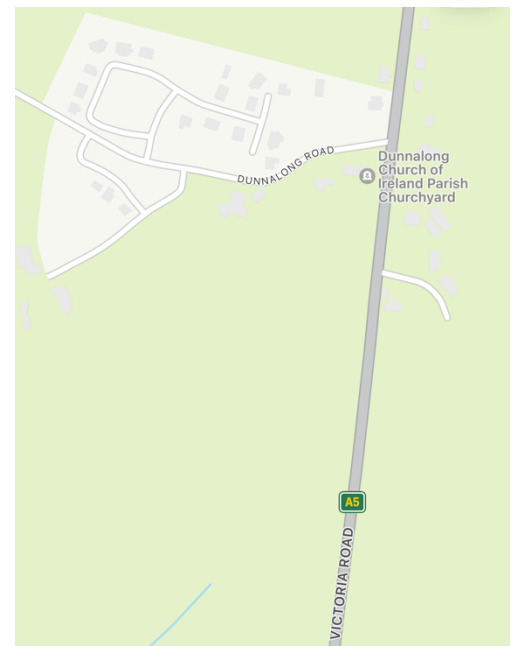
- We seek a dedicated, pastorally minded, faithful Rector who has an understanding of the Church of Ireland in terms of belief, ethos, worship and practice;
- A person who will encourage and inspire the development of the gifts/talents of others;
- A prayerful person with a pastoral heart and a desire to proclaim the message of the scriptures in today's society.
- Someone who will be interactive and relate with all age-groups especially youth and children's ministry;
- A visionary who can build on existing ministries while developing new initiatives with parishioners in all areas of church life;
- A Rector who will help us develop a Mission Strategy that will enable us to reach out and welcome all ages into Church life;
- A Rector who will provide a full range of pastoral care to all parishioners, particularly the sick, bereaved and housebound.

Location of Parish:

St. Patrick's Church, Leckpatrick is situated on the outskirts of the village of Ballymagorry and is easily accessible from the main A5 (Strabane-Londonderry). Upon leaving the village, travelling in the direction of Londonderry, the Church is visible on your right-hand side and is located at the junction of Leckpatrick Road and Lowertown Road. The church is located approximately 11 miles from the historic City of Londonderry and the town of Strabane is approximately 2 miles.



St. John's Church, Dunnalong is located in the village of Bready, on the main A5 road. It is situated on the left hand side of the road when coming from the Strabane/Ballymagorry direction, and on the right side of the road when coming from the Londonderry/New Buildings direction. The church is located approximately 7 miles from the historic City of Londonderry to the north and the town of Strabane, approximately 6 miles to the south.

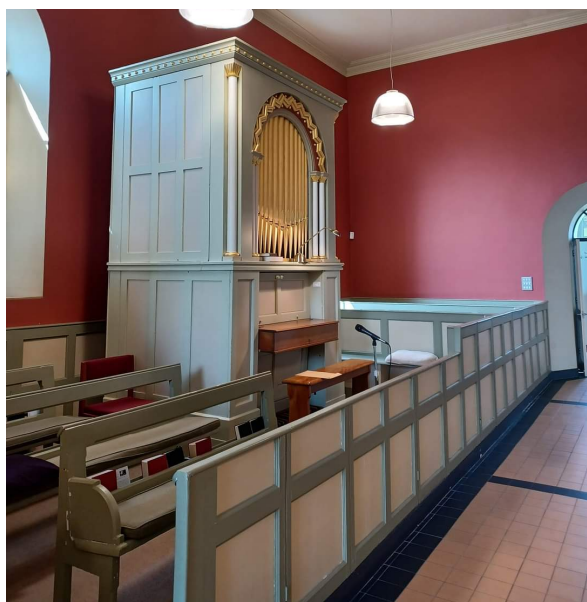


Excellent transport facilities exist through the City of Derry Airport (19 miles), Translink Central Bus Depot and Train Station in Londonderry serving the main towns in Northern Ireland, with a main Bus Centre Hub in Strabane. There is also a regular bus service to Dublin, as well as an Airport link to Belfast International, George Best City Airport and Dublin Airport. The majority of Parishioners of the Parish generally reside in the geographical areas of Ballymagorry, Artigarvan, Bready, Magheramason and Newbuildings. Some of the most spectacular scenery in the North West of Ireland is to be found within easy access of the Parish.

Parochial Buildings:

St. Patrick's Church Leckpatrick

celebrated 200 years of worship and witness in 2015 with a Festival of Flowers with Vintage and Photographic displays. The church was completely renovated in 2000 and is in excellent repair. The Building is unique in shape and furnishings in that it is built in a 'T' shape with a central aisle and a north-facing aisle. The seating consists of box pews. At the East end of the Central Aisle the Communion Table is located with a distinctive semi-circular communion rail. In the Centre of the Church, at the cross section of the two aisles the unique Prayer Desk and Pulpit is located. The Vestry is located to the rear of the Pulpit/Prayer Desk. There is a small manual pipe organ situated near the entrance to the Church building. While there are no stained glass windows in St, Patrick's Church, some of the windows have sketched biblical scenes frosted onto them. In the grounds of the Church there is a parish graveyard, which has been extended in recent years. Audio visuals were fitted in the Church in 2020.



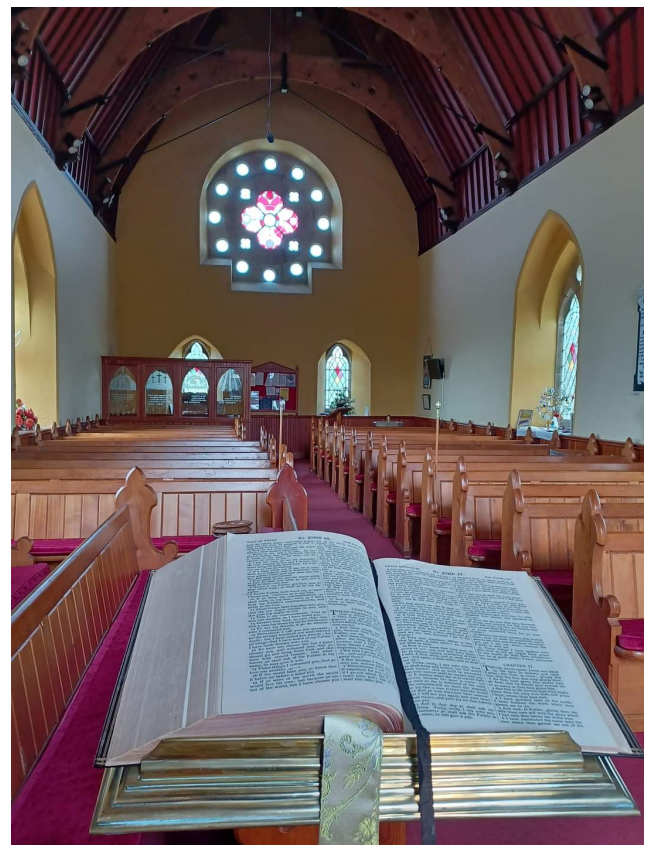
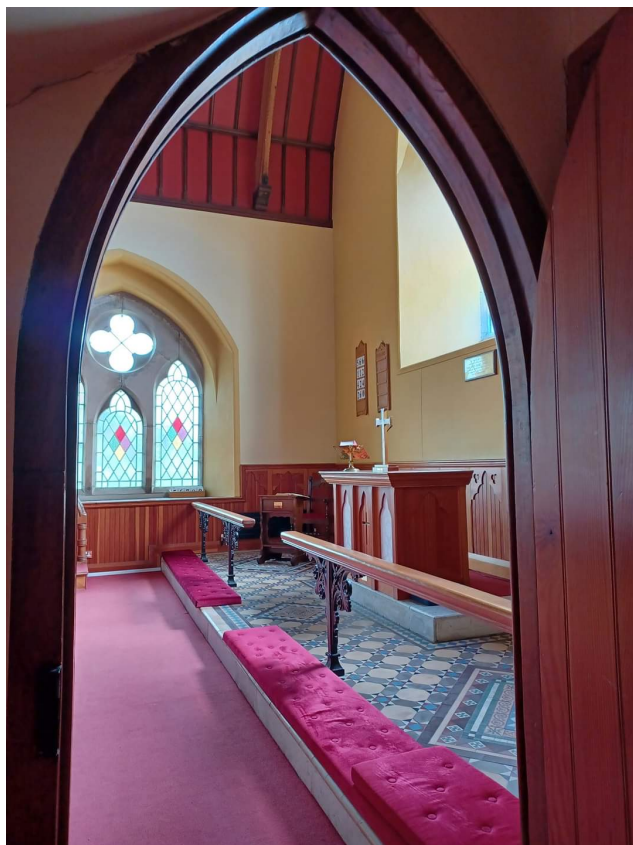


The Milliken Hall is situated beside St. Patrick's Church, Leckpatrick consisting of a large main hall with stage and a committee room. The kitchen was refurbished in 2014. The Hall is used for the Sunday School, Mothers' Union, Weekly Luncheon Club, annual Rickety Wheel and Rainbow/Brownies. Permission is also granted for the hall to be used by the local WI for their annual Christmas party.



The Sollus Centre is located directly across the main A5 road from the Church adjacent to the Church carpark. This consists of a large main hall, kitchen, toilet facilities and offices on the ground floor with further offices on the second floor. The Hall, whilst not a parish facility, is used by the Parish and Community alike.

St. John's Church, Dunalong celebrated 150 years of worship and witness in 2016 with a 150 Years of Reaping and Sowing Vintage Harvest Festival. The church was completely renovated during 1998 and is in excellent repair. Though to look at the building from the outside it is traditional in shape and stonework, there is a contemporary feel inside the Church. Also, within the Church there are toilet facilities and a small kitchen. The Vestry is located in an upstairs room above the Kitchen and a small Graveyard is around the Church building. Plans are in place for the re-pointing of the external stonework. Audio visuals were fitted in the Church in 2020.



Rectory:



Situated beside the carpark of St. Patrick's Church, Leckpatrick on Lowertown Road is the Rectory. The Rectory was built in 1981, renovated in 2007 and in 2019. It is a split level house on a sloping site with garage and boiler under the bedrooms. It is set in its own private landscaped grounds, with panoramic views of the surrounding countryside, and is a short walk to the centre of the village of Ballymagorry. Accommodation comprises of entrance hall and stairs, sitting room, dining room, family room, kitchen, utility and cloakroom. The stairs lead to the office and four bedrooms, and large family bathroom. The master bedroom has en-suite facilities. The windows and exterior doors are uPVC and the house is heated by Oil Fired Central Heating. There is a spacious Driveway.



Education Facilities:

Primary School Education:

Artigarvan Primary School, a 6-teacher school with a community nursery school located approximately 2 miles from The Rectory.

Bready Jubilee Primary School is a 6-teacher school with a community play school on site. Located approximately 3 miles from the Rectory.

In the past the Rector has been invited to take a seat on the Board of Governors of Artigarvan Primary School or Bready Jubilee Primary School.

Secondary Education:

Strabane Academy is located in the neighbouring town of Strabane.

In the city of Londonderry, there is Foyle College, Oakgrove Integrated College and Lisneal College.

Further Education:

North West College with campuses in Strabane and Londonderry.

South West College with a campus in Omagh.

University of Ulster, Magee campus is located in the City of Londonderry.

Number of families:

The Parish at present has some **186 families (total of 418 Parishioners)** on the parish register with the potential for growth with new housing developments planned.

Parish Breakdown

The recent parish Returns record the population being:

Leckpatrick	117 Families	248 People
Dunnaalong	69 Families	169 People

Age profile of Congregation:

The age profile of the congregation is infants to ninety years plus.

Hospitals/Nursing Homes:

Altnagelvin Area Hospital (Londonderry)

Kingsbridge Private Hospital (Ballykelly)

There are a number of nursing homes locally in Strabane, Omagh, Castlederg and the City of Londonderry.

Pattern of Worship:

1 st & 3 rd Sunday in the Month	Holy Communion 2
2 nd & 5 th Sunday in the Month	Morning Prayer 2
4 th Sunday in the Month	Family Service

Services are held during Lent and Holy Week. The Parish enjoys the celebration of special festivals such as Harvest, Christmas and Easter. The organists and the choirs prepare for these occasions and any other services requested by the Rector. Music, particularly at morning services, tends to be from the Church of Ireland Hymnal and/or Thanks and Praise.

Services are supported and complemented by the assistance of a Diocesan Reader and individuals who have permission to administer the chalice at Communion.

There are Sunday School in both Churches which meets during the service. The children attend Church for the first part of the service when a children's address may be given and then leave for Sunday School. The Sunday School are currently following the Diocesan Sunday School Curriculum.

Worship style tends to be traditional, however, the congregation are comfortable with alternate pattern of worship being used. The Parish has welcomed and hosted services for the local Primary School, Loyal Orders, Royal British Legion and Mothers' Union.

Finance:

Both Churches are financially solvent and a copy of the latest Financial Reports are attached along with this profile. A Free Will Offering system is in place and the system of Standing Order and Gift Aid is actively encouraged. The administration of all monies is ably handled by the Hon Treasurers and a team of recorders.

Both Churches are registered with the Charity Commission of Northern Ireland and both vestries are committed to fully comply with our accounting obligation.

Staffing:

The Parishes have Sextons/volunteers, Organists and Sunday School/Crèche volunteers.

Other relevant information:

The current Stipend and Locomotory allowance are in line with Diocesan rules (paid directly from the RCB) and the Expenses of Office Allowance (paid direct to the Rector by the Parish Honorary Treasurers) these are all in line with Diocesan rules.

The Parish is a Group and therefore each Parish has its own Select Vestry.

Our Rector will be expected to interact with other Christian Communities and leaders in the area.

Parochial Nominators:

Mrs Sylvia Donnell	02871882900
Mr Geoffrey Kelly	07710558114
Mr Stephen Murdock	07771792923
Mrs Kaye Nesbitt	07902875664

“He has shown you, O mortal, what is good. And what does the LORD require of you? To act justly and to love mercy and to walk humbly with your God.” Micah 6: 8